



St Barnabas and St Philip's Newsletter

Summer 1—Week 6—2025/26



Each week, children who display exemplary learning behaviours are chosen as our **stars of the week**.

This week our stars of the week are:

- Nursery** - Myles C
- Reception**—David
- Year 1** - Kaiden
- Year 2** - Isla
- Year 3**—Meera
- Year 4** - Daphne
- Year 5**- Mayson
- Year 6** - Aymara



Important Dates

1st June —School Open for Summer Term 2

1st June —Year 6 Walter Greeves Workshop

4th June —Year 4 Cricket Workshop

9th June —Primary Debate Workshop (Selected KS2 Children)

11th June —Whole School Church Service at St Barnabas

12th June —London Air Ambulance Sessions

15th June —Class Photographs



Our value this term is **'Perseverance'**

This week our value stars are:

- Nursery** - Aya
- Reception**—Lamiek
- Year 1** - Orianna
- Year 2** - Harvey
- Year 3** - Zemen
- Year 4** - Sofia
- Year 5**- Bethel
- Year 6** - Chloe

ATTENDANCE MATTERS

every student, every day



This week our attendance statistics are:

- Reception**- 97.7%
- Year 1**- 90.8%
- Year 2** - 95.2%
- Year 3** - 100%
- Year 4** - 91.8%
- Year 5**- 100%
- Year 6** - 93.9%

The winning classes are:

Years 3 and 5





Our Value for This Term Is:

Celebrating Perseverance at St Barnabas and St Philip's

At St Barnabas and St Philip's, we celebrate the value of Perseverance – the determination to keep going, even when things are difficult. Perseverance means not giving up, trying again, and showing courage when we face challenges. It is through perseverance that we grow in strength, develop resilience, and achieve our goals.



Why is Perseverance Important?

Perseverance builds character. It helps us to stay focused and committed, even when the journey is tough. By persevering, we learn that mistakes are part of learning and that effort leads to improvement. At school, perseverance helps us to tackle new concepts, stay motivated, and support one another when things are hard. It encourages us to keep trying, to seek help when needed, and to take pride in our progress.

Ways to Practice Perseverance at Home

Here are a few ways children can build perseverance with their families and friends. These habits can help foster a strong mindset and a positive approach to learning and life:

Tackling Challenges Together: When faced with something tricky – a difficult homework task, learning a new skill, or helping with something at home – work together as a family to break it down into steps. Talk about how it feels to stick with it and celebrate when it's completed.

Recognising Effort, Not Just Outcomes: Praise children not only for getting things right, but for trying hard, being patient, and not giving up. Talk about what they've learned from something that didn't go well straight away.

Perseverance Role Models: Share stories of people – from your family, history, sport, or faith – who showed perseverance and succeeded through effort and determination. These examples can inspire children to keep going, even when it's difficult.

As we focus on Perseverance this term, let's remember that steady effort, even when progress feels slow, leads to real growth. By building perseverance in small, everyday ways, we strengthen our school community with courage, determination, and the belief that we can all reach our potential – no matter the obstacles.





Subject Stars!

We are excited to announce our Subject Stars awards for Summer Term 1!

Each half term, we recognise and celebrate the achievements of our students in the foundation subjects—Design and Technology (DT), Art, Sports, Music, French, and Computing.

A special certificate will be awarded to those who have shown exceptional effort, creativity, and progress in their respective areas.

Well Done Super Stars!





DT Stars!

Nursery – Raya

Reception – Sophie

Year 1 – Jibran

Year 2 – Rayan G

Year 3 – Lawson

Year 4 – William

Year 5 – Christianna



Music Stars!

Nursery – Ediardo

Reception – Emilio

Year 1 – Nomin

Year 2 – An-Yi

Year 3 – Daniel K

Year 4 – Renee

Year 5 – Kiran

Year 6 - Luca





Linguists of the Term

Year 3 - Daniel N

Year 4 - Daphne

Year 5 - Zoe

Year 6 - Luca



Sports Stars

Nursery - Charlotte VL

Reception - Eithan

Year 1 - Indianna

Year 2 - Chloe

Year 3 - Maisie

Year 4 - Aseel

Year 5 - Abtin

Year 6 - Vova





Artists of the Term

Nursery – Atena

Reception – Adam

Year 1 – Ava-Rae

Year 2 – Nova

Year 3 – Andalus

Year 4 – Claire

Year 5 – Matilda



Computing Stars of the Term

Year 1 – Kaiden

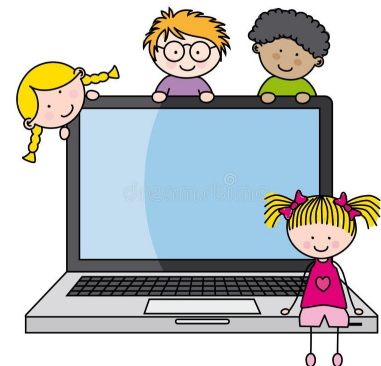
Year 2 – An Yi

Year 3 – Zemen

Year 4 – Daphne

Year 5 – Sahara

Year 6 - Sofia





School Church Services

We appreciate that we are able to visit both St Barnabas and St Philip's each term.

We invite all parents/carers to join us for these services, but ask that you join us at the church.

Our remaining service dates for Summer Term are:

Staff are accompanying the children on the walk and having parent's there can sometimes be a little distracting.

Thursday 11th June 2026 — St Barnabas Service

Friday 17th July 2026 — St Barnabas Leavers Service

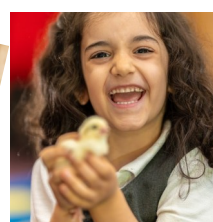




Great Exhibition Road Festival



Join us for the Great Exhibition Road Festival, a free science and arts weekend event for all ages. [Find out more](#) ▶





Mother Nature Summer Camps



SUMMER CAMP

July-August 2026 | 8 Weeks Available | Monday-Friday

Four Out-of-this-World Science-Week Topics to Choose from:


SCIENCE EXPLORER


SCIENCE FACTORY


SCIENCE ACADEMY


SCIENCE FORCES



Book Online:
mnature.co.uk

Or Call:
020 8863 8832

LIMITED EARLY-BIRD -£150 OFF (£295pw)

Excellent
★★★★★
Trustpilot

WINNER BEST HOLIDAY CAMPS HOOP AWARDS

- ✓ Small, Structured Classes Limited to 20 Kids
- ✓ Safe, Fun, Social, Active and Educational STEM
- ✓ For All Boys & Girls Aged 5-11 Yrs
- ✓ The No.1 Holiday Camp - as Voted by You

Ofsted
Registered
Childcare Vouchers Accepted

Scan Me!





SUMMER CAMP 2026 Information

In every week of MNS Summer Holiday Science Activity Camp, your child will enjoy over **40+** premium safe, fun, hands-on, educational, science activities and special demonstrations with take-home experiments - across *Chemistry, Biology and Physics!*

Overview:

- Open to Children: ages 5-11 years
- Locations: across London (look right>)
- Times: 9am-3:30pm Extended: 8:30am-4pm

Dates:

See website for dates running at your location

Week A: Mon 06-Fri 10 Jul 2026 (5 days)

Week B: Mon 13-Fri 17 Jul 2026 (5 days)

Week C: Mon 20-Fri 24 Jul 2026 (5 days)

Week D: Mon 27-Fri 31 Jul 2026 (5 days)

Week E: Mon 03-Fri 07 Aug 2026 (5 days)

Week F: Mon 10-Fri 14 Aug 2026 (5 days)

Week G: Mon 17-Fri 21 Aug 2026 (5 days)

Week H: Mon 24-Fri 28 Aug 2026 (5 days)

• **FOUR Fantastic Science Activity Weeks:**
*Science Explorer! Science Factory!
Science Academy! Science Forces!*

Did you know? We run new science sessions every holidays! See website for full list...

VENUES Serving:

NW London

- Barnet
- Brent
- Camden
- Ealing
- Harrow
- Hillingdon
- Westminster

SW London

- Kensington
- Hammersmith and Fulham
- Hounslow
- Kingston
- Merton
- Richmond
- Sutton
- Wandsworth

NE London

- City of London
- Enfield
- Hackney
- Haringey
- Islington
- Newham
- Tower Hamlets
- Waltham Forest

Google Say "Mother Nature Science Camp" ⚡

★★★★★ 5.0/5

Book online at:
www.mnature.co.uk

Or call us today:
020 8863 8832

Also, Booking Online:
*May-June Half-Term 2026
Holiday Science Activity Camp
-Epic Engineering!*



*October Half-Term 2026
Holiday Science Activity Camp
-Halloween Science!*



**Did You Know?
we also do
THE BEST
BIRTHDAY PARTY
EVER!**





KS2 (Years 3-6)

Holland Park Cricket



OUTDOOR COMMUNITY SESSIONS

WEDNESDAYS 5.00pm-6.00pm

3rd June until 22nd July 2026 (8 weeks)

**HOLLAND PARK,
ILCHESTER PLACE,
KENSINGTON,
W8 6LU**

- All sessions are free to students from Holland Park & South Kensington Primary Schools
- Open to boys and girls
- Level 2 qualified & DBS checked coaches
- Opportunities to take part in competitive matches

Please contact Matthew Luddington (Hub Supervisor) to confirm your place:



07900 650 555



matthew.luddington@platform-ldn.org



www.platform-LDN.org





Summer Term Dates

- **Half Term**— 25th May—29th May
- **Year 1 National Phonics Screening Check** – Monday 8th – Friday 12th June
- **Year 4 National Multiplication Check** – Monday 8th – Friday 12th June
- **Class Photographs** – Monday 15th June
- **Sports Day** – Thursday 2nd July (9.15am–3.00pm)
- **Year 6 Production** – Wednesday 8th and Thursday 9th July (5.30pm)
- **Summer Fair** – Friday 10th July (3.30pm-5.00pm)
- **End of Summer Term**—Friday 17th July (school closes at 1.30pm)





Donations and School Support

We are incredibly thankful to all the parents/carers who regularly donate to our school community - whether it be through time, bringing in used uniform or books, or through monetary donations.

We would like to bring to your attention several other ways in which you can donate to the school if you are able to:

Amazon Wish Lists

[Reading Wish List](#)

[Maths Wish List](#)

Easy Fundraising Link

[Easy Fundraising](#)





Governors Fund 25-26

As you may be aware, we are a voluntary aided Church of England Primary School with approximately 210 pupils. We are devoted to providing our pupils with the best possible learning environment based on decent morals and values, and we are proud to have served our community for over a century.

As a Church of England School, we are required to contribute an annual maintenance fee to the London Diocese Board for School. This fee allows the school to effectively benefit from the LDBS maintenance scheme that provides 90% of the overall cost for approved capital projects including redevelopment of the existing facilities and major refurbishments.

Over the years, our pupils have benefitted from a range of capital projects, including, a new bridge linking two blocks, a fully equipped school kitchen, music room, Computing suite, library, refurbished classrooms, new toilets, a new roof and skylights.

I am sure you will appreciate, it is vital for our pupil's education, that we provide them with the best facilities possible. This can only be achieved through the kind generosity of parents, and though the fee per pupil is voluntary, we ask all parents to contribute £45 per pupil per academic year or such amount, as they are able, in order that our pupils continue to benefit from the LDBS maintenance scheme.

Unfortunately, any shortfall in the overall Governors maintenance fund will have to be taken from the school delegated budget that in turn will mean funds being diverted from other areas of the curriculum.

Contributions can be made via Arbor or directly to the Governors fund account:

METRO BANK. Sort code: 23-05-80
Account number: 18996065

We appreciate any contributions to this fund.

Address:

St Barnabas and St Philip's
Church of England Primary
School
Pembroke Mews
58 Earls Court Road
Kensington
London
W8 6EJ

Tel: [0207 937 9599](tel:02079379599)

Email: admin@sbsp.rbkc.sch.uk

Term Dates

Please see the [Term Date Section](#) on our School Website for the full details of term dates.

Please note that any holidays in term time cannot be authorised.

